



Institute of Science Tokyo

AOTULE SUMMER PROGRAM

Period: Sun 1 June, 2025 – Sun 31 August, 2025

Venue: Tokyo/Yokohama, Japan



Main Building & Library, Ookayama Campus, Tokyo

[Science Tokyo Information]

[Institute of Science Tokyo](#)

[School Information]

[School of Engineering](#)

[School of Materials and Chemical Technology](#)

[School of Environment and Society](#)



Suzukakedai Campus, Yokohama



Taki Plaza, Ookayama



Asia-Oceania Top University League on Engineering

The Asia-Oceania Top University League on Engineering (AOTULE), founded in 2007, is a league of 13 premier engineering universities within Asia-Oceania region. The AOTULE promotes inter-university cooperation through joint programs including an annual Dean's meeting, student workshop and exchanges of students and staff, in order to improve the quality of engineering education and research of the members. It aims to broaden participating students' perspectives through education, research and cross-cultural interactions (excerpts from AOTULE website).

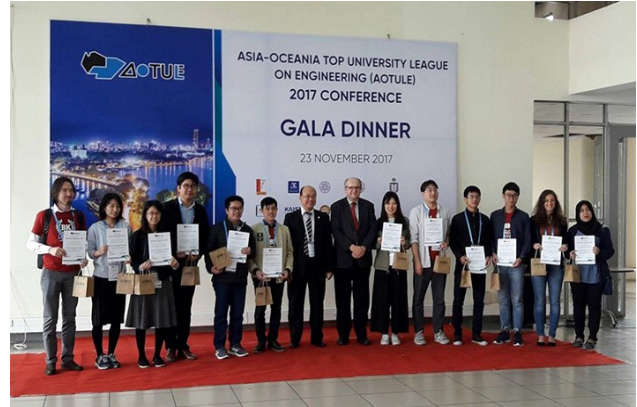


AOTULE Conference, November 2019, Ookayama Campus, Tokyo



AOTULE Conference 2018

Indian Institute of Technology Madras



AOTULE Conference 2017

Hanoi University of Science and Technology

PROGRAM

Starting in 2008, **Tokyo Tech AOTULE Summer Program** has been hosting more than 176 students from the AOTULE Member-Universities. From 2025, **Science Tokyo** will succeed in operating the Summer Program. In **the three-month research-oriented program**, participants will pursue **their research project individually under the supervision of one of Science Tokyo's faculty members** while experiencing international collaborative work in the supervisor's laboratory. Furthermore, the students will also have the opportunity to learn about **state-of-the-art technology** in Japan and the **basic Japanese language through coursework**.

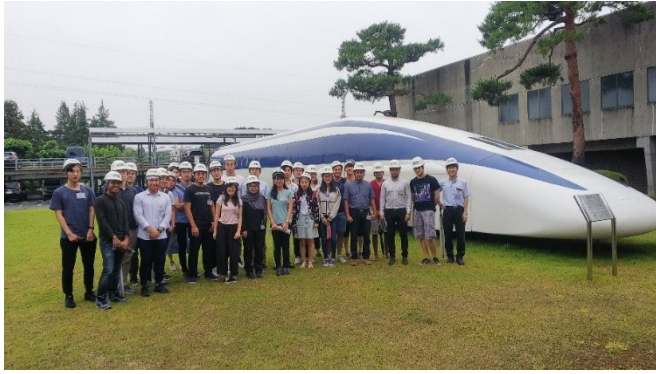


VENUE

<https://www.titech.ac.jp/english/maps/>

Ookayama Campus 2-12-1 Ookayama, Meguro-ku, Tokyo

Suzukakedai Campus 4259 Nagatsuta-cho, Midori-ku, Yokohama, Kanagawa



Railway Technical Research Institute Visit



Japanese Culture Experience

EXCHANGE PERIOD

Sun 1 June, 2025 to Sun 31 August, 2025

Participants **MUST** arrive at our designated dormitory on 1 June 2025 and leave on 31 August 2025. During the exchange period, students may not leave Japan unless there are emergencies such as health/family issues. Those who plan to attend any international conferences outside Japan during the above exchange period are not eligible to apply for this program.

SCHOLARSHIP (Daily Allowance)

Daily allowance* is provided by Science Tokyo or the Japanese Government Fund (JASSO).

*The amount is yet to be determined. For your reference, the amount in the 2024 program was approximately JPY 2,000/day.

TUITION FEES

Tuition fees for the program are waived.

STUDENT VISA

All participants, including those from visa waiver countries, must obtain a 'Student Visa' immediately after receiving an acceptance notification to this program.

AIR TICKETS

Participants are required to purchase their airline tickets to/from Japan at their own expense and to notify our coordinator of the flight details.

ACCOMMODATION

Participants must stay at a designated dormitory sponsored by Science Tokyo.

*Accommodation is provided for the exchange students only. Science Tokyo cannot provide/help find accommodation for his/her family or others accompanying the participants. Also, some students may be required to share a double room with another student.

INSURANCE

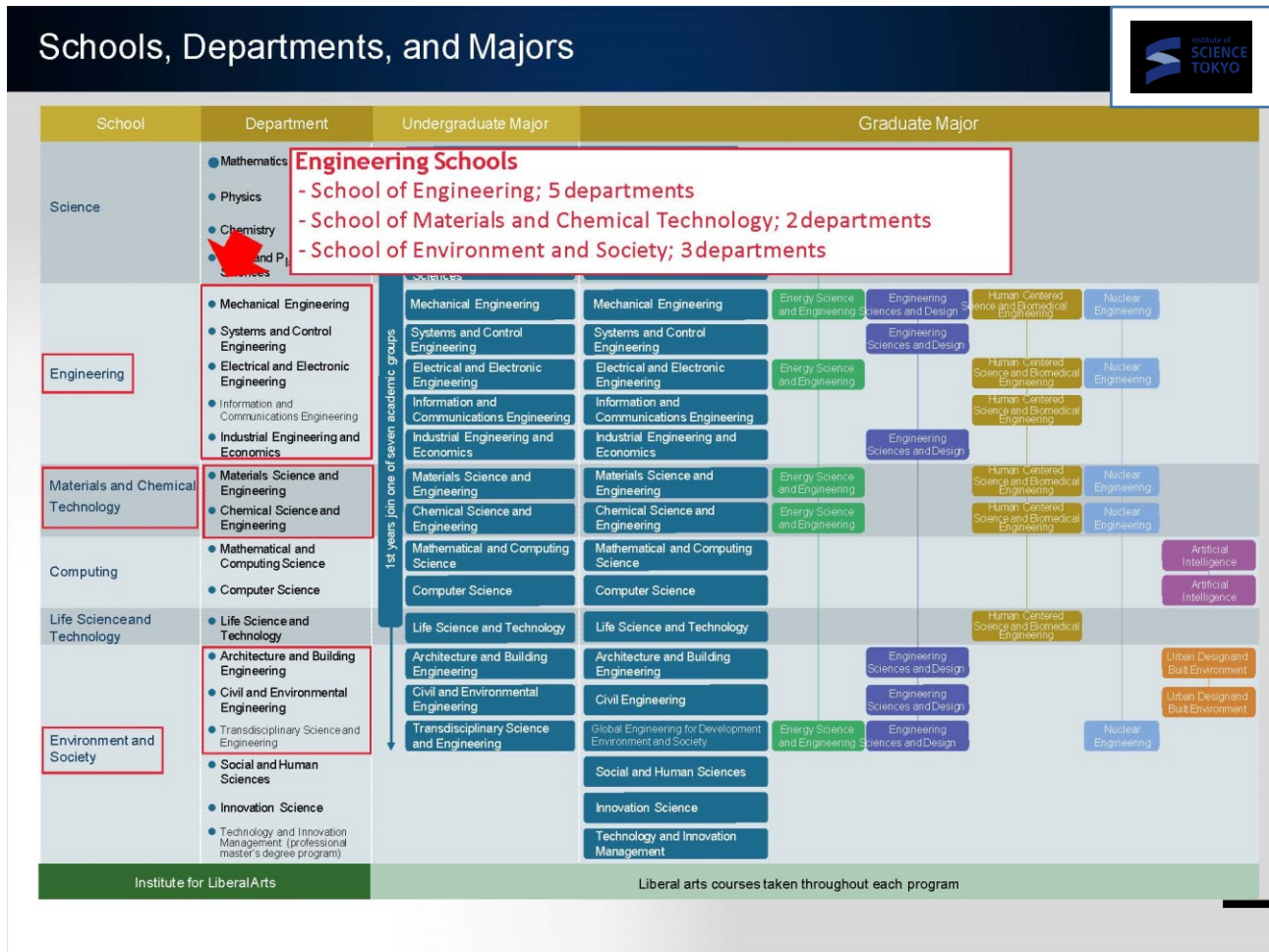
It is mandatory for all exchange students to enroll in the Science Tokyo On-campus Accident/Liability Insurance. Please carefully note that students are responsible for payment of their premium upon arrival. In addition, students are required to join the National Health Insurance System in Japan. Furthermore, we highly recommend that students purchase medical/travel insurance in advance in their home country.

OTHER ACTIVITIES

In addition to conducting a research project, participants are required to complete designated coursework(s). Furthermore, there is a two-day workshop (The 16th Multidisciplinary International Student Workshop (MISW2025), where the participants present their work as well as introduce their home institution to Science Tokyo students.

*Reference: MISW2024 <http://www.aotule.eng.titech.ac.jp/MISW/2024/>

ENGINEERING SCHOOLS



Reference: [List of Departments | Education | Institute of Science Tokyo](#)

The selection result will be notified by mid-January 2025.

Inquiry: ko.intl@jim.titech.ac.jp (AOTULE Program Office, Science Tokyo)

Application documents are required to be submitted to the coordinator of your own institute for internal selection. (NOT Science Tokyo).