

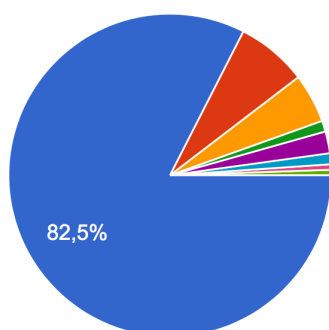
SURVEY RESUL OF NEW ALUMNI

Tổng số lượng trả lời online

1. . Please choose your current or intended working / study status in the near future

tu

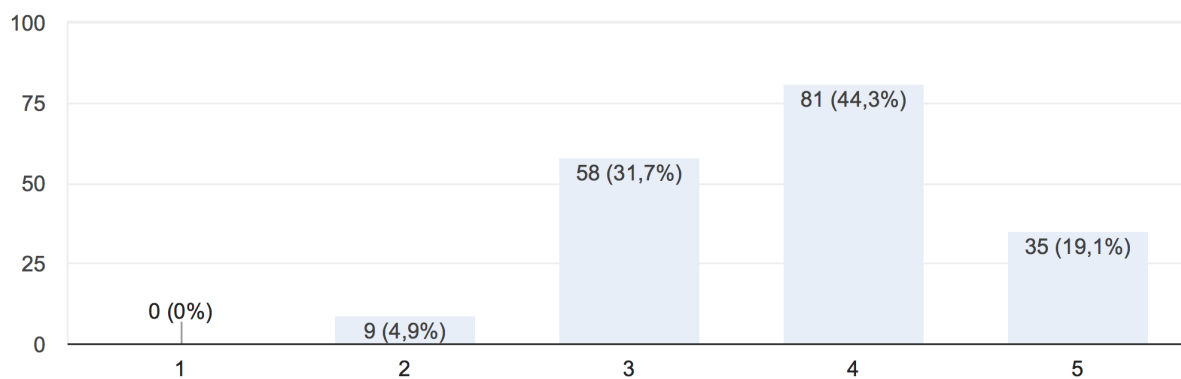
183 câu trả lời



- Working in the specialized field that relates to the field trained in university
- Working in other fields that does not relate to the field trained in university
- Study further in an area that relates to the field trained in university
- Study further in an area that does not relate to the field trained in university
- Part time study and part time work
- Others

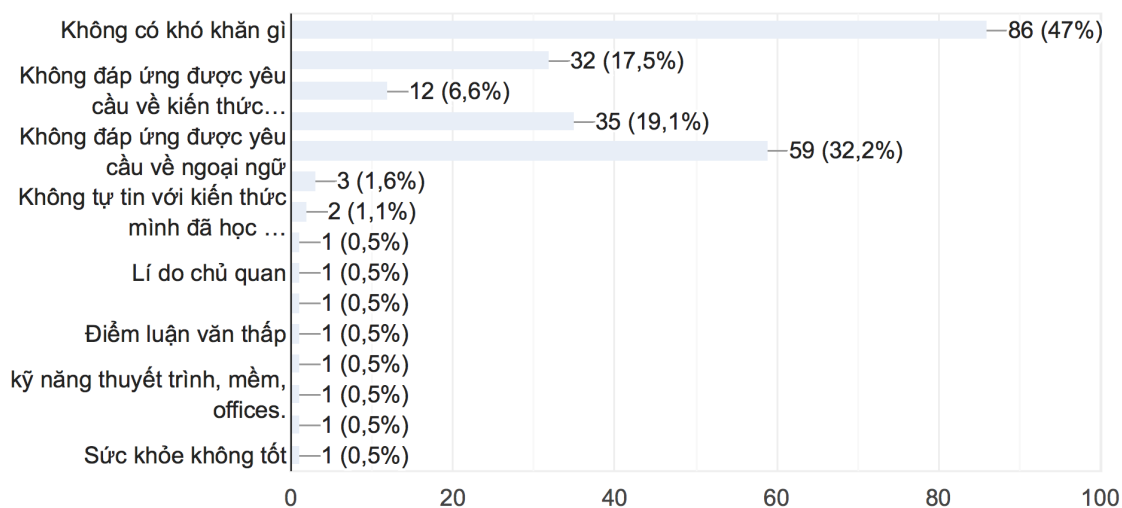
2. Evaluate the prospects of your working / study status that you are planning in near future

183 câu trả lời



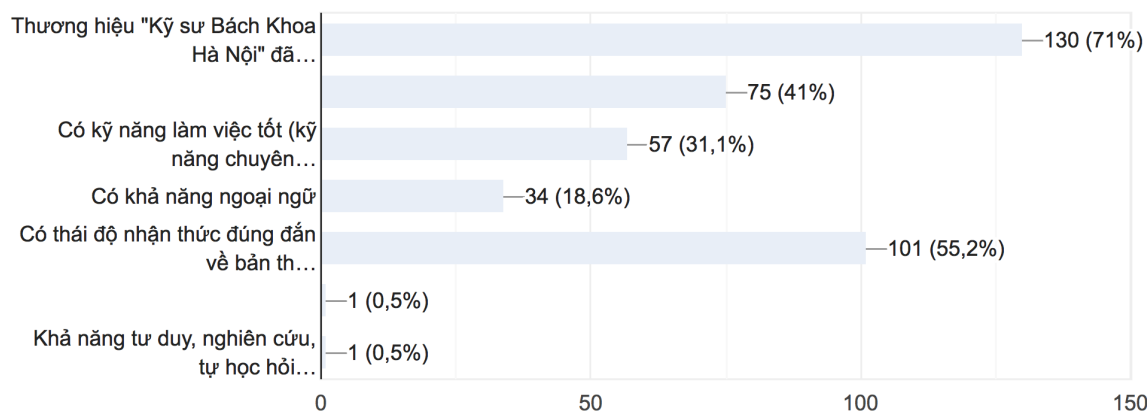
3. What difficulties do you face when applying for job or school positions?

183 câu trả lời



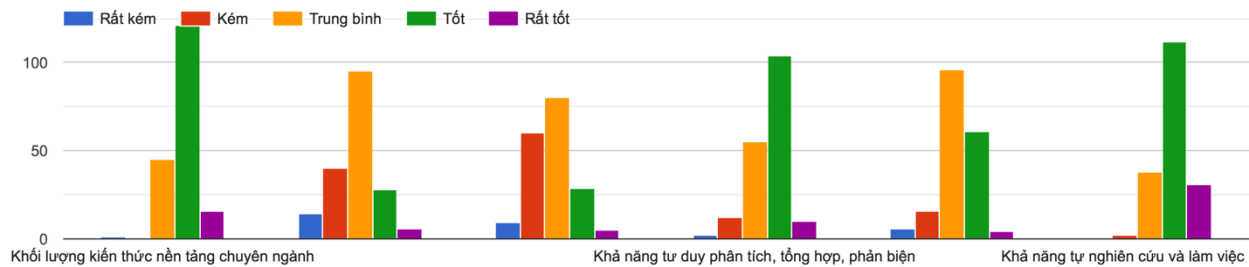
4. What advantages do you have when applying for job or school positions?

183 câu trả lời



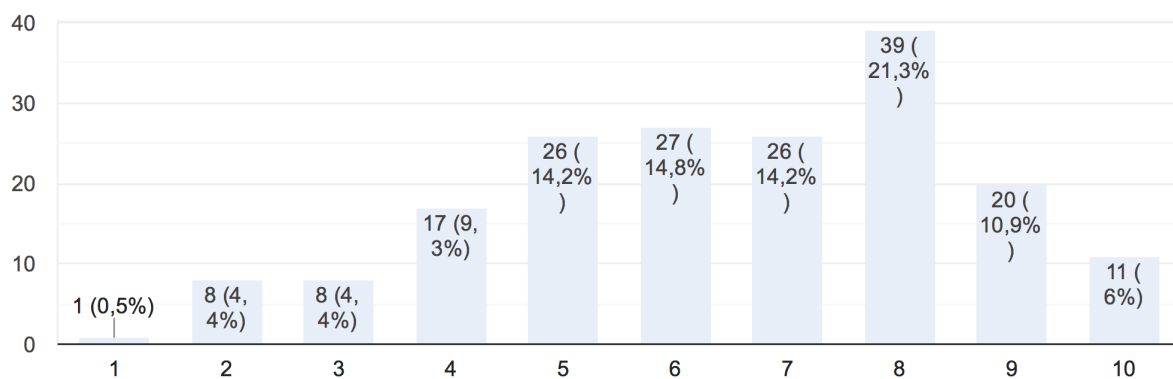
C. Comments on Training Program

In terms of meeting the requirements of the labor market and higher research, please rate the training program according to the following criteria



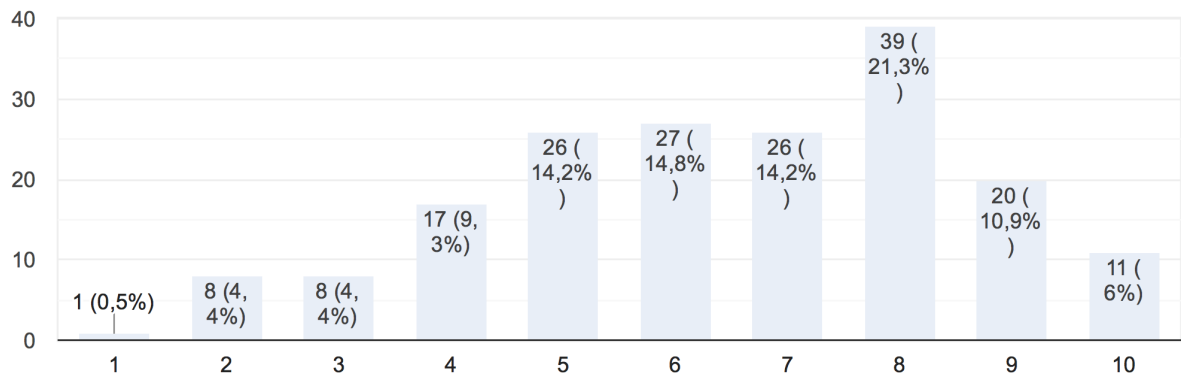
6. The training program is appropriate compared to the level of acquiring knowledge and skills of students

183 câu trả lời



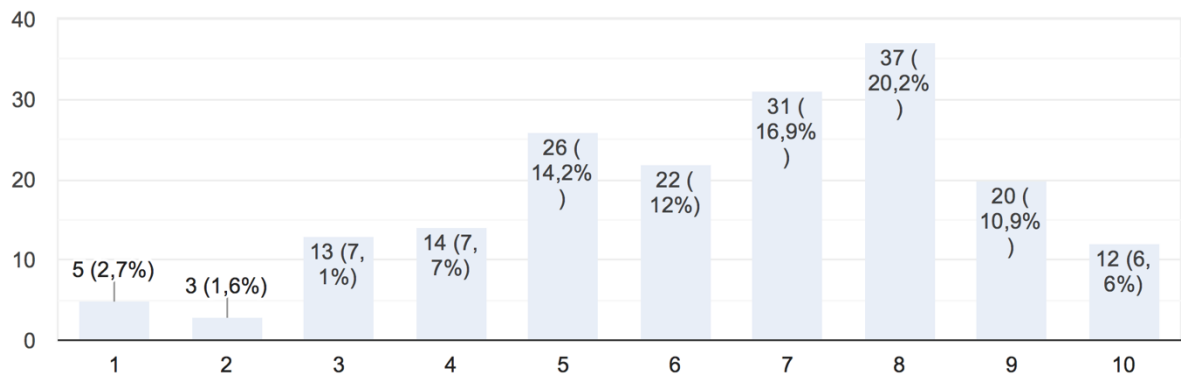
6.4 Students are supported and consulted in terms of learning, scientific research methods, materials, lectures, syllabus..

183 câu trả lời



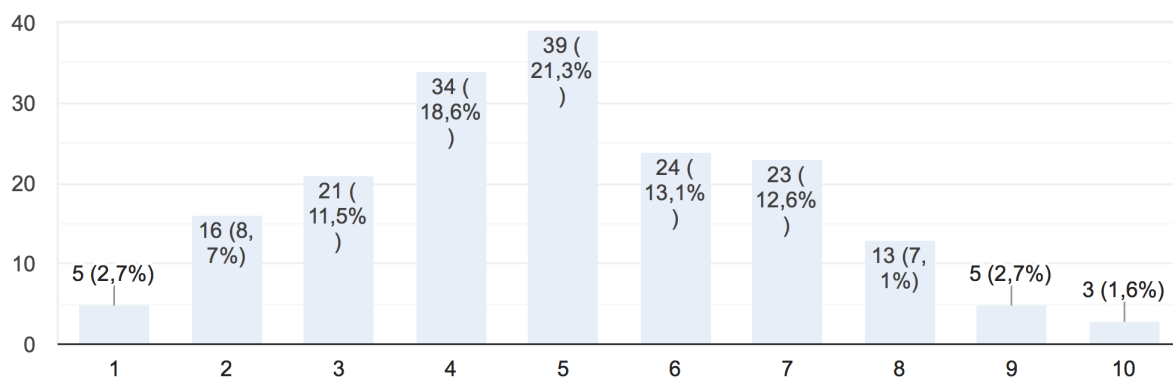
6.5 Students are supported with career orientation

183 câu trả lời



6.6 Students are trained and cultivated the necessary soft skills for future work through the learning process

183 câu trả lời



6.7 Students are oriented to be aware of values of themselves, develop personality, and build up personal development process

183 câu trả lời

